

CB = 588°09'16"E
CL = 286.79'
L = 286.80'
R = 11499.16'

DRainage Easement for Future Phases of the County of Hays Vol. 1177 P. 174

100 YEAR FEMA FLOODPLAIN

INDIAN PAINTBRUSH DRIVE

AMBERWOOD SUBDIVISION (FUTURE PHASE) UNRECORDED

CURVE	LENGTH	RADIUS	CHORD BEARING	CHORD
C1	20.75'	11419.16'	S88°48'00"E	20.75'
C2	121.12'	11419.16'	S88°26'38"E	121.12'
C3	11419.16'	11419.16'	S87°57'44"E	70.88'
C4	50.45'	11419.16'	S87°39'29"E	50.45'
C5	108.27'	11499.16'	N87°42'35"W	108.27'
C6	178.53'	11499.16'	N88°25'27"W	178.53'
C7	48.02'	405.00'	N89°13'35"W	45.00'
C8	70.18'	405.00'	N16°30'32"W	70.10'
C9	41.55'	345.00'	N08°37'29"W	41.52'
C10	56.59'	345.00'	N16°46'26"W	56.53'
C11	44.11'	345.00'	S17°48'38"E	44.08'
C12	51.78'	405.00'	S17°48'38"E	51.75'

LINE	LENGTH	BEARING
L1	3.46'	S77°22'15"E
L2	20.07'	S05°10'30"E
L3	20.07'	S05°10'30"E
L4	11.29'	S21°28'24"E
L5	25.09'	S21°28'24"E
L6	60.00'	N75°10'00"E
L7	21.25'	N65°09'40"W
L8	47.90'	N71°31'49"W
L9	20.03'	S21°28'24"E
L10	44.23'	N50°10'30"W
L11	41.03'	N39°49'30"E

CURVE	LENGTH	RADIUS	CHORD BEARING	CHORD
C1	20.75'	1419.16'	S88°48'00"E	20.75'
C2	121.12'	1419.16'	S88°26'38"E	121.12'
C3	70.88'	1419.16'	S87°57'44"E	70.88'
C4	50.45'	1419.16'	S87°39'29"E	50.45'
C5	108.27'	1499.16'	N87°42'35"W	108.27'
C6	178.53'	1499.16'	N88°25'27"W	178.53'
C7	45.02'	405.00'	N08°21'35"W	45.00'
C8	70.16'	405.00'	N08°03'32"W	70.10'
C9	41.55'	345.00'	N08°37'29"W	40.92'
C10	56.59'	345.00'	N16°46'26"W	56.53'
C11	44.11'	345.00'	S17°48'38"E	44.08'
C12	51.78'	405.00'	S17°48'38"E	51.75'

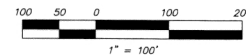
LINE	LENGTH	BEARING
L1	3.46'	S77°22'15"E
L2	20.07'	S05°10'30"E
L3	20.07'	S05°10'30"E
L4	11.29'	S21°28'24"E
L5	25.09'	S21°28'24"E
L6	60.00'	N75°51'08"E
L7	21.25'	N65°09'40"W
L8	47.90'	N71°31'49"W
L9	20.03'	S21°28'24"E
L10	44.23'	N50°10'30"W
L11	41.03'	N39°49'30"E

●	IRON ROD FOUND
○	IRON ROD SET
⊙	PIPE FOUND
▲	NAIL FOUND
—//—	WOOD FENCE
—X—	WIRE FENCE
—o—	CHAIN LINK FENCE
P.U.E.	PUBLIC UTILITY ESMT.
D.E.	DRAINAGE ESMT.
B.L.	BUILDING LINE
⊕	POWER POLE
—+—	OVERHEAD ELEC. LINE
—+→	DOWN GUY
(BRG.—DIST)	RECORD CALL

1. PHASE 1 TRACT LIES ENTIRELY WITHIN
J.K. MILLER SURVEY #2.

2. LOTS 1A AND 46A ARE TO HAVE
ACCESS LIMITED TO INDIAN PAINTBRUSH
DRIVE ONLY.

BLOCK DESIGNATION

**SE**

SOUTHWEST ENGINEERS, INC.
ENGINEERS - PLANNERS
307 St. Lawrence Gonzales, Texas 78629-3935

Landscaped Areas

Vol. 11 Pg. 118

INDIAN PAINTBRUSH PHASE 1
Bk. 10, Pg. 369 & 370

INDIAN PAINTBRUSH SUBDIVISION - PHASE 2 FINAL PLAT

GILBERT E. DAVILA
AND
FLORINDA DAVILA
32,377 ACRES
VOL. 1165, PG. 279

PARK SOUTH SUBDIVISION
VOL. 2, PG. 349

INDIAN PAINTBRUSH, LTD
42,798 ACRES
DOCUMENT #BC9918005

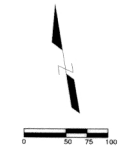
INDIAN PAINTBRUSH, LTD
DOCUMENT #BC9918005

Line	Bearing	Length	Line	Bearing	Length
L1	S 71° 19' 53.26" W	51.03	L56	N 23° 38' 34.22" E	40.00
L2	S 71° 19' 53.26" W	38.15	L57	N 23° 38' 34.22" E	59.85
L3	S 71° 19' 53.26" W	53.11	L58	N 16° 7' 47.20" E	64.06
L4	S 71° 19' 53.26" W	38.80	L59	S 73° 52' 12.80" E	120.00
L5	S 71° 19' 53.26" W	40.48	L60	N 23° 38' 34.22" E	40.00
L6	N 70° 11' 51.12" W	86.22	L61	N 23° 38' 34.22" E	40.00
L7	N 6° 42' 23.98" W	106.80	L62	N 73° 52' 12.80" W	47.87
L8	S 23° 38' 34.22" W	40.00	L63	N 80° 54' 58.00" E	95.96
L9	S 73° 52' 12.80" E	78.94	L64	N 73° 52' 12.80" W	47.87
L10	S 30° 57' 21.20" E	38.66	L65	N 23° 38' 34.22" E	40.00
L11	N 73° 52' 12.80" E	40.00	L66	N 23° 38' 34.22" E	59.85
L12	S 23° 38' 34.22" W	58.43	L67	N 23° 38' 34.22" E	40.00
L13	S 30° 41' 6.62" W	85.55	L68	N 23° 12' 54.60" W	40.00
L14	N 16° 7' 47.20" E	184.71	L69	N 23° 38' 34.22" E	40.00
L15	S 73° 52' 12.80" E	40.00	L70	S 58° 53' 48.10" E	69.97
L16	N 16° 7' 47.20" E	18.98	L71	N 23° 38' 34.22" E	59.85
L17	N 73° 52' 12.80" W	40.00	L72	N 23° 38' 34.22" E	40.00
L18	N 73° 52' 12.80" W	40.00	L73	N 71° 58' 34.52" E	134.28
L19	S 23° 38' 34.22" W	63.52	L74	S 16° 7' 47.20" W	54.06
L20	N 23° 38' 34.22" E	3.31	L75	S 16° 7' 47.20" W	40.00
L21	N 23° 38' 34.22" E	58.43	L76	N 23° 38' 34.22" E	40.00
L22	S 73° 52' 12.80" E	40.00	L77	N 80° 54' 58.00" W	116.72
L23	N 71° 53' 46" E	51.34	L78	N 10° 54' 42.07" W	110.54
L24	N 73° 52' 12.80" W	40.00	L79	N 23° 38' 34.22" E	40.00
L25	N 23° 38' 34.22" E	27.12	L80	N 23° 38' 34.22" E	59.85
L26	N 23° 38' 34.22" E	40.00	L81	N 16° 7' 47.20" W	32.04
L27	N 73° 52' 12.80" W	40.00	L82	S 16° 7' 47.20" W	20.00
L28	N 23° 38' 34.22" E	58.43	L83	N 16° 7' 47.20" W	75.97
L29	N 23° 38' 34.22" E	40.00	L84	N 23° 38' 34.22" E	40.00
L30	N 73° 52' 12.80" W	40.00	L85	N 23° 38' 34.22" E	40.00
L31	N 80° 54' 58.00" W	86.18	L86	N 23° 38' 34.22" E	40.00
L32	N 23° 38' 34.22" E	63.52	L87	N 23° 38' 34.22" E	42.81
L33	N 23° 38' 34.22" E	40.00	L88	N 23° 38' 34.22" E	40.00
L34	N 23° 38' 34.22" E	40.00	L89	N 23° 38' 34.22" E	40.00
L35	N 23° 38' 34.22" E	40.00	L90	N 23° 38' 34.22" E	40.00
L36	N 23° 38' 34.22" E	40.00	L91	N 23° 38' 34.22" E	40.00
L37	N 23° 38' 34.22" E	40.00	L92	N 23° 38' 34.22" E	40.00
L38	N 23° 38' 34.22" E	40.00	L93	N 23° 38' 34.22" E	40.00
L39	N 23° 38' 34.22" E	40.00	L94	N 23° 38' 34.22" E	40.00
L40	N 23° 38' 34.22" E	40.00	L95	N 23° 38' 34.22" E	40.00
L41	N 23° 38' 34.22" E	40.00	L96	N 16° 7' 47.20" E	72.96
L42	S 73° 52' 12.80" E	12.61	L97	N 16° 7' 47.20" E	40.00
L43	N 23° 38' 34.22" E	40.00	L98	N 23° 38' 34.22" E	40.00
L44	N 23° 38' 34.22" E	40.00	L99	N 16° 7' 47.20" E	62.91
L45	N 23° 38' 34.22" E	40.00	L100	N 16° 7' 47.20" E	73.97
L46	N 23° 38' 34.22" E	40.00	L101	N 16° 7' 47.20" E	70.91
L47	N 23° 38' 34.22" E	40.00	L102	N 16° 7' 47.20" E	22.22
L48	N 23° 38' 34.22" E	40.00	L103	N 16° 7' 47.20" E	22.22
L49	N 23° 38' 34.22" E	40.00	L104	N 23° 38' 34.22" E	40.00
L50	N 23° 38' 34.22" E	40.00	L105	S 73° 52' 12.80" E	60.00
L51	N 23° 38' 34.22" E	40.00	L106	N 23° 38' 34.22" E	40.00
L52	N 23° 38' 34.22" E	40.00	L107	S 73° 51' 41.99" W	58.54
L53	N 23° 38' 34.22" E	40.00	L108	S 73° 52' 12.80" E	18.74
L54	N 23° 38' 34.22" E	40.00	L109	S 73° 51' 41.99" W	66.21
L55	N 23° 38' 34.22" E	40.00	L110	S 73° 41' 59.19" W	68.24
L56	S 18° 51' 52.00" W	67.07	L111	N 23° 38' 34.22" W	120.18
L57	N 23° 38' 34.22" E	40.00	L112	N 23° 38' 34.22" W	120.18
L58	N 23° 38' 34.22" E	40.00	L113	N 73° 54' 43.19" W	40.00
L59	N 23° 38' 34.22" E	40.00	L114	N 73° 54' 43.19" W	40.00
L60	N 23° 38' 34.22" E	40.00	L115	N 73° 54' 43.19" W	40.00
L61	N 23° 38' 34.22" E	40.00	L116	N 73° 54' 43.19" W	81.17

INDIAN PAINTBRUSH SUBDIVISION - PHASE 4A FINAL PLAT

GILBERT E. DAVILA
AND
FLORINDA DAVILA
32.377 ACRES
VOL. 1165, PG. 279

PARK SOUTH SUBDIVISION
VOL. 2, PG. 349

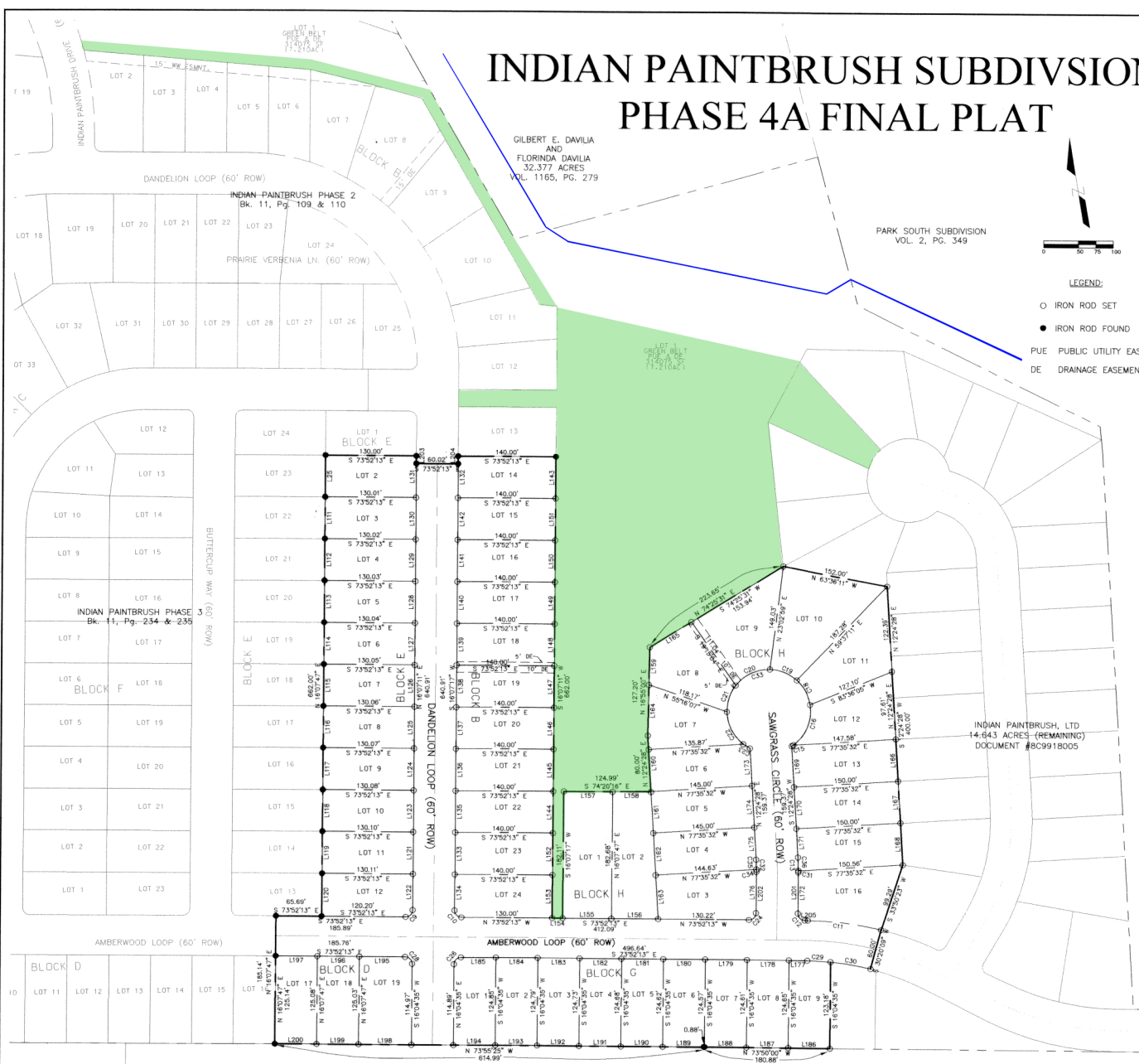
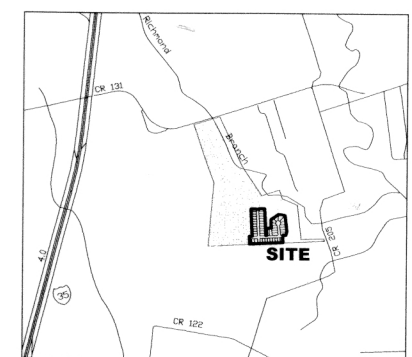


LEGEND:

- IRON ROD SET
- IRON ROD FOUND
- PUE PUBLIC UTILITY EASEMENT
- DE DRAINAGE EASEMENT

LINE TABLE			LINE TABLE		
LINE	LENGTH	BEARING	LINE	LENGTH	BEARING
L25	60.00	N16°07'47"E	L158	50.08	S74°20'16"E
L111	60.00	N16°07'47"E	L159	54.25	N16°55'00"E
L112	60.00	N16°07'47"E	L160	60.00	N12°24'28"E
L113	60.00	N16°07'47"E	L161	60.00	N12°24'28"E
L114	60.00	N16°07'47"E	L162	60.00	N12°24'28"E
L115	60.00	N16°07'47"E	L163	63.52	N16°55'00"E
L116	60.00	N16°07'47"E	L164	72.95	N16°55'00"E
L117	60.00	N16°07'47"E	L165	69.71	S74°25'31"W
L118	60.00	N16°07'47"E	L166	60.00	N12°24'28"E
L119	60.00	N16°07'47"E	L167	60.00	N12°24'28"E
L120	62.00	N16°07'47"E	L168	60.00	N12°24'28"E
L121	60.00	N16°07'11"E	L169	58.53	N12°24'28"E
L122	52.00	S16°07'11"W	L170	60.00	N12°24'28"E
L123	60.00	S16°07'11"W	L171	40.84	N12°24'28"E
L124	60.00	S16°07'11"W	L172	59.42	N16°07'47"E
L125	60.00	S16°07'11"W	L173	53.53	N12°24'28"E
L126	60.00	S16°07'11"W	L174	60.00	N12°24'28"E
L127	60.00	S16°07'11"W	L175	45.84	S12°24'28"W
L128	60.00	S16°07'11"W	L176	59.39	S16°07'47"W
L129	60.00	S16°07'11"W	L177	26.65	S73°52'13"E
L130	60.00	S16°07'11"W	L178	60.00	S73°52'13"E
L131	60.00	S16°07'11"W	L179	60.00	S73°52'13"E
L132	60.00	N16°07'47"E	L180	60.00	S73°52'13"E
L133	60.00	N16°07'17"E	L181	60.00	S73°52'13"E
L134	52.00	S16°07'17"W	L182	60.00	S73°52'13"E
L135	60.00	S16°07'17"W	L183	60.00	S73°52'13"E
L136	60.00	S16°07'17"W	L184	60.00	S73°52'13"E
L137	60.00	S16°07'17"W	L185	49.99	S73°52'13"E
L138	60.00	S16°07'17"W	L186	60.00	S73°50'00"E
L139	60.00	S16°07'17"W	L187	60.00	S73°50'00"E
L140	60.00	S16°07'17"W	L188	60.00	S73°49'56"E
L141	60.00	S16°07'17"W	L189	59.12	S73°52'13"E
L142	60.00	S16°07'17"W	L190	60.00	S73°55'25"E
L143	60.00	N16°07'47"E	L191	60.00	S73°55'25"E
L144	60.00	S16°07'17"W	L192	60.00	S73°55'25"E
L145	60.00	S16°07'17"W	L193	60.00	S73°55'25"E
L146	60.00	S16°07'17"W	L194	60.00	S73°55'25"E
L147	60.00	S16°07'17"W	L195	65.76	S73°52'13"E
L148	60.00	S16°07'17"W	L196	60.00	S73°52'13"E
L149	60.00	S16°07'17"W	L197	60.00	S73°52'13"E
L150	60.00	S16°07'17"W	L198	75.86	S73°55'25"E
L151	60.00	S16°07'17"W	L199	60.00	S73°55'25"E
L152	60.00	N16°07'17"E	L200	60.00	S73°55'25"E
L153	62.00	S16°07'17"W	L201	58.42	S16°07'47"E
L154	15.12	N73°52'43"W	L202	59.39	N16°07'47"E
L155	66.99	N73°52'13"E	L203	11.09	S16°07'11"W
L156	66.99	N73°52'13"E	L204	11.09	N16°07'11"E
L157	69.91	N74°20'16"W	L205	4.40	S74°09'48"E

CURVE TABLE				
CURVE	LENGTH	RADIUS	CHORD BEARING	CHORD LENGTH
C9	15.62	10.00	N60°52'46"E	14.08
C10	15.71	10.00	S28°52'28"E	14.14
C11	106.62	435.00	S68°56'52"E	106.34
C12	15.81	10.00	S28°56'46"E	14.21
C13	21.44	330.00	N14°16'07"E	21.43
C15	2.83	60.00	N71°53'21"E	2.83
C16	66.16	60.00	N36°07'01"E	62.98
C18	40.78	60.00	N12°56'30"W	40.00
C19	42.32	60.00	N52°37'14"W	41.45
C20	56.11	60.00	S80°33'00"W	54.08
C21	40.78	60.00	S34°07'26"W	40.00
C22	53.68	60.00	S11°07'13"E	52.18
C23	11.30	60.00	S42°43'47"E	11.19
C24	15.71	10.00	N61°07'47"E	14.14
C26	15.72	10.00	S61°06'11"W	14.15
C28	15.70	10.00	N68°53'49"W	14.14
C29	33.40	370.00	N71°07'04"W	33.39
C30	58.34	370.00	S64°05'53"E	58.28
C31	2.27	330.00	N15°56'54"E	2.27
C32	17.54	270.00	N14°06'02"E	17.54
C33	314.16	60.00	N77°35'32"E	60.00
C34	3.38	270.00	N15°06'18"E	3.38
C35	14.16	270.00	N13°34'58"E	14.16
C36	19.17	330.00	N14°04'18"E	19.17



Landscaped Areas

INDIAN PAINTBRUSH SUBDIVISION - PHASE 4B FINAL PLAT

GILBERT E. DAVILA
AND
FLORINDA DAVILA
32.377 ACRES
VOL. 1165, PG. 279

PARK SOUTH SUBDIVISION
VOL. 2, PG. 349

ROBERT F. BROWN
2.58 ACRES
VOL. 494, PG. 128

ABELARDO PEREZ AND MARY E. PEREZ
4.21 ACRES
VOL. 377, PG. 863

CYNTHIA M. CAMPBELL
2.29 ACRES
VOL. 1063, PG. 332

ELMER JOHN SASSMANSHAUSEN
AND CAROL S. SASSMANSHAUSEN
14.56 ACRES
VOL. 362, PG. 332

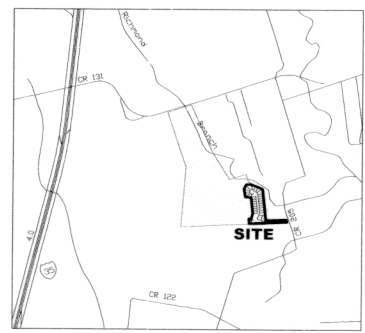
ELMER JOHN SASSMANSHAUSEN
10.00 ACRES
VOL. 362, PG. 332



- LEGEND:
- IRON ROD SET
 - IRON ROD FOUND
 - PUE PUBLIC UTILITY EASEMENT
 - DE DRAINAGE EASEMENT

LINE	LENGTH	BEARING
L205	60.00	N12°24'28"E
L206	60.00	N12°24'28"E
L207	60.00	N12°24'28"E
L208	60.00	N12°24'28"E
L209	60.00	N12°24'28"E
L210	60.00	N12°24'28"E
L211	60.00	N12°24'28"E
L212	46.15	N12°24'28"E
L213	60.00	N12°24'28"E
L214	60.00	N12°24'28"E
L215	60.00	N12°24'28"E
L216	60.00	N12°24'28"E
L217	52.58	N12°24'28"E
L218	26.00	N12°24'28"E
L219	41.19	N12°24'28"E
L220	46.39	N12°24'28"E
L221	57.75	N12°24'28"E
L222	60.00	N12°24'28"E
L223	60.00	N12°24'28"E
L224	60.00	N12°24'28"E
L225	60.00	N12°24'28"E
L226	41.41	N12°24'28"E
L227	30.04	N48°24'45"E
L228	25.79	N12°24'28"E
L229	60.00	N12°24'28"E
L230	40.86	N12°24'28"E
L231	19.14	N12°24'28"E
L232	60.00	N12°24'28"E
L233	60.00	N12°24'28"E
L234	60.00	N12°24'28"E
L235	60.00	N12°24'28"E
L236	60.00	N12°24'28"E
L237	59.14	N12°24'28"E
L238	28.22	N12°24'28"E
L239	10.79	N43°20'37"E
L240	20.36	N43°20'37"E
L241	37.36	N43°20'37"E
L242	13.61	N10°00'43"E
L243	20.00	N12°24'28"E
L244	60.00	N12°24'28"E
L245	47.35	N12°24'28"E
L246	45.77	N12°24'28"E
L247	106.08	N60°15'42"E
L248	59.18	N49°24'24"E
L249	9.00	N12°24'28"E

CURVE	LENGTH	RADIUS	CHORD BEARING	CHORD LENGTH
C35	68.24	370.00	N63°24'34"W	68.14
C36	62.76	370.00	N52°18'18"W	62.69
C37	65.15	370.00	N42°23'00"E	64.81
C38	13.86	270.00	N13°24'41"E	13.86
C39	127.35	1300.00	N61°36'28"W	121.45
C40	7.43	120.00	N10°26'03"E	7.43
C41	35.00	60.00	S43°20'00"E	34.51
C42	35.00	60.00	S60°00'11"W	34.51
C43	17.63	60.00	S29°21'30"W	17.87
C44	68.00	60.00	S74°31'40"W	78.10
C45	30.32	60.00	N50°23'30"W	30.00
C46	23.64	60.00	N61°34'30"W	68.53
C47	11.74	9.00	S63°38'30"E	10.93
C48	44.63	180.00	N32°30'30"W	44.51
C49	65.28	180.00	N17°13'48"W	60.50
C50	65.28	180.00	N61°36'03"E	60.00
C51	60.74	330.00	N20°24'30"E	60.65
C52	60.08	330.00	N31°23'30"E	60.00
C53	35.36	347.58	S59°29'21"E	36.36
C54	16.37	10.00	S61°00'11"E	14.81
C55	78.49	368.77	S86°28'31"E	78.33
C56	47.63	351.40	S70°08'10"E	47.60
C57	18.59	330.00	N14°01'10"E	18.59
C58	50.65	330.00	N44°10'30"E	50.60
C59	128.54	438.43	S58°49'00"E	128.09
C60	50.34	370.00	S64°10'30"E	50.28
C61	84.40	430.00	N54°02'30"E	84.26
C62	15.04	10.00	N86°29'31"E	13.66
C64	134.77	1200.00	N12°46'30"W	127.80
C65	276.24	60.00	S89°50'30"W	89.32
C66	167.87	150.00	N12°46'30"E	161.60
C67	190.06	330.00	N28°54'36"E	187.44
C68	144.53	370.00	S81°59'50"E	143.16
C69	66.48	216.00	N32°24'48"E	66.39
C70	155.50	270.00	S28°54'28"W	153.36
C71	2.69	62.88	N12°24'28"E	2.69



VICINITY MAP
SCALE: 1"=2000'

Landscaped Areas